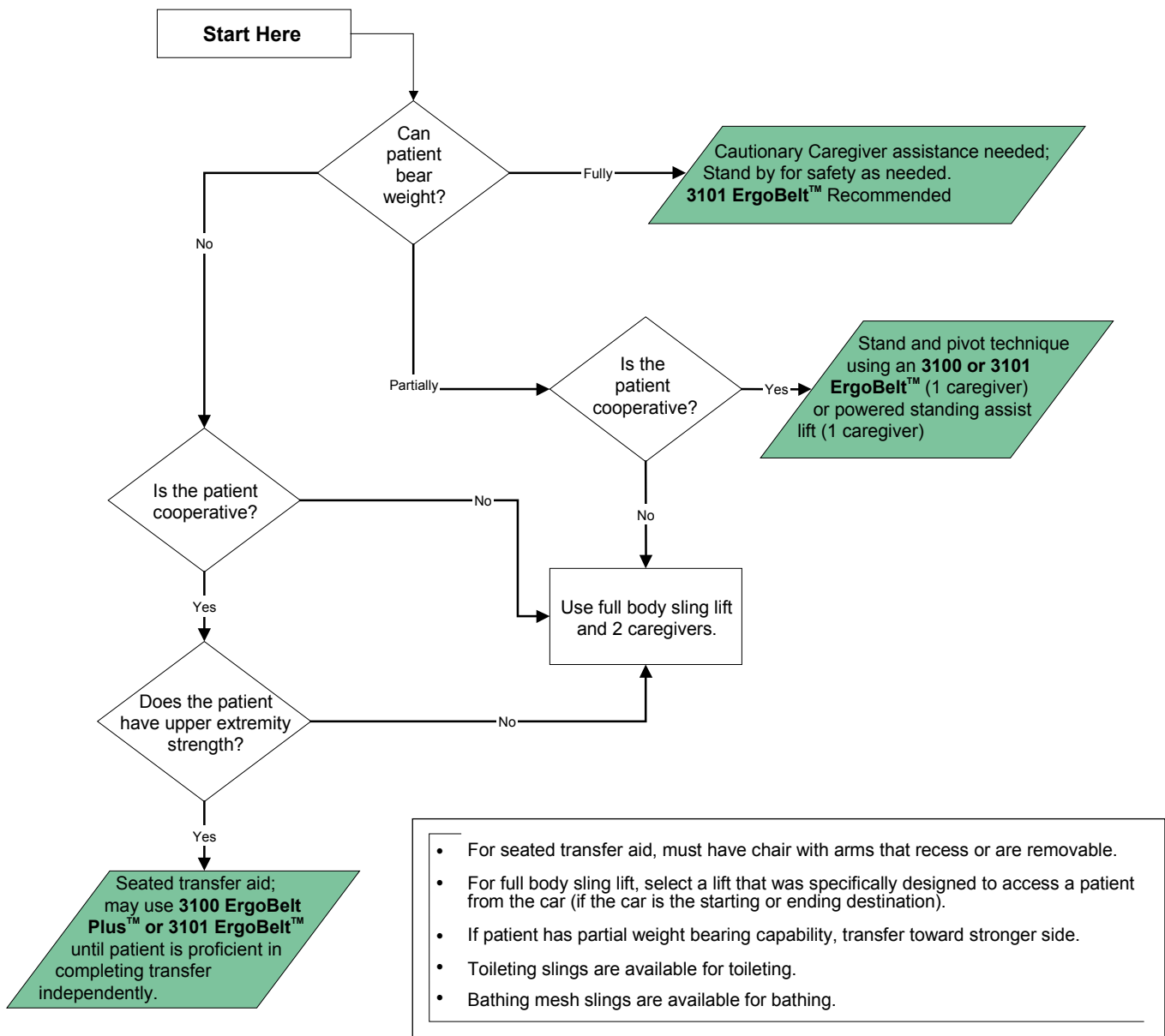




# ErgoSafe Algorithm 1

Transfer to and from: Bed to Chair, Chair to Toilet, Chair to Chair, or Car to Chair



- For seated transfer aid, must have chair with arms that recess or are removable.
- For full body sling lift, select a lift that was specifically designed to access a patient from the car (if the car is the starting or ending destination).
- If patient has partial weight bearing capability, transfer toward stronger side.
- Toileting slings are available for toileting.
- Bathing mesh slings are available for bathing.